



Adresse / Address

Datum / Date

Kontakt / Contact

08/2014

Ledermann GmbH & Co. KG
Willi-Ledermann-Str. 1
D-72160 Horb a.N.

Tel. +49 (0) 74 51 / 93 - 0
info@leuco.com
www.leuco.com

Betreff / Subject

Seite / Page

LEUCO SmartCNC: HSK-F63 Collet chucks with internal collet nut system from 2 to 25 (1") mm, 462 E (OZ 25)

01/02

Inhalt / Content

The modern 5-axis technology proves its benefit with the appropriate accessories. LEUCO offers extra-long slim collet chucks for your 5-axis aggregates. This allows to reach areas on workpieces which are hard to access with standard cutters and drill bits. Expensive extra-large special tools are often no longer necessary.

The balance quality of G 2.5 allows high RPM up to 24,000 U/min and guarantees extremely smooth running of the tools and excellent surface quality. The necessary high clamping forces are reached thanks to the patented internal Zeta® safety profile.

Thanks to the unique form fit of clamping key and clamping nut there is no danger of injury (slip off) for the operator during the clamping and unclamping process.

Machine / Application

- | CNC machines; 5-axis working centers
- | special moldings with deep cavities, i.e. manufacturing of stairs, chairs, etc.

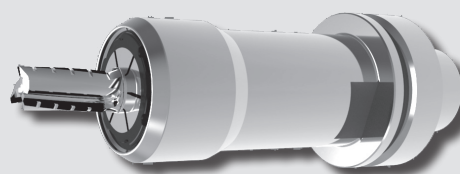
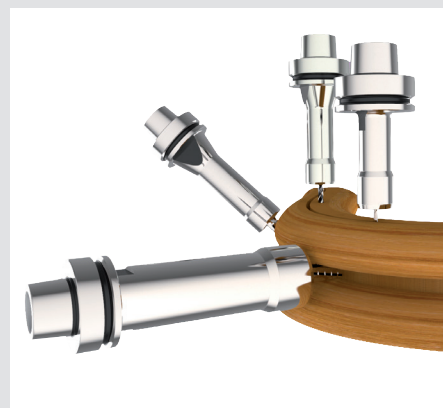
Design

- | hardened and polished
- | internal collet nut
- | for double-slotted collets
- | balanced 24,000 RPM
- | balance quality G 2.5

Advantages

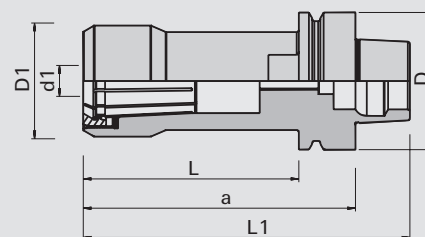
- | slim design
- | high clamping force

Bildmaterial / Imagery



HSK-F63 Collet chucks System 462 E (OZ 25)

Ø d1min	Ø D1	Ø d	Ø D	L	L1	a	Ident-No.
2-25	51	HSK 63F	63	50	101	76	184858
2-25	51	HSK 63F	63	89	140	115	184860
2-25	51	HSK 63F	63	124	175	150	184861 o
2-25	51	HSK 63F	63	149	200	175	184862 o
2-25	51	HSK 63F	63	174	225	200	184863
2-25	51	HSK 63F	63	199	250	225	184864
[mm]	[mm]	[mm]	[mm]	[mm]	[mm]	[mm]	



*The draw-in collet chucks are also available for collet chucks 426 E (ER 16) see folder 839461 and 470 E (ER 32) see folder 839465.

LEUCO

www.leuco.com



Adresse / Address

Datum / Date

Kontakt / Contact

08/2014

Ledermann GmbH & Co. KG
Willi-Ledermann-Str. 1
D-72160 Horb a.N.

Tel. +49 (0) 74 51 / 93 - 0
info@leuco.com
www.leuco.com

Betreff / Subject

Seite / Page

LEUCO SmartCNC: HSK-F63 Collet chucks with internal collet nut system from 2 to 25 (1") mm, 462 E (OZ 25)

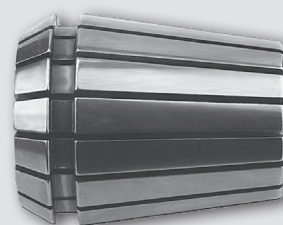
02/02

Inhalt / Content

Bildmaterial / Imagery

Collet chucks System 462 E (OZ 25)

Ø d1min	Ø d1min	Ø D	L 1	Ident-No.	
2		34.8	52	183803	o
3		34.8	52	183804	o
4		34.8	52	183805	
5		34.8	52	183806	o
6		34.8	52	180213	
	1/4	34.8	52	175815	
7		34.8	52	183807	o
8		34.8	52	180358	
9.5		34.8	52	175817	
10		34.8	52	170782	
12		34.8	52	168742	
	1/2	34.8	52	175820	
13		34.8	52	180215	
14		34.8	52	170783	
	5/8	34.8	52	175823	
15		34.8	52	183808	o
16		34.8	52	168743	
18		34.8	52	180216	
	3/4	34.8	52	175826	
20		34.8	52	168744	
25		34.8	52	168745	
[mm]	[inch]	[mm]	[mm]		



[a]



[b]



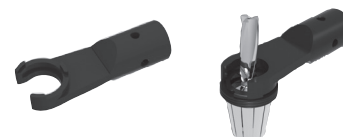
[c]



[d]



[e]



Accessories / Mounting Devices / Spare parts

Product	For type	Ident-No.
[a] Collet nut	462E / OZ 25	184877
[b] Hand spanner	462E / OZ 25	184880
[c] Screw-in aid	462E / OZ 25	184883
[d] Torque nut	462E / OZ 25	184886
[e] Torque adapter	462E / OZ 25	184889
Torque wrench 20-200Nm	462E / OZ 25	184890

no marking – immediately available
 8 – modification and/or mounting of stock parts
 o – available on short notice
 s – production per drawing(custom made tool)

– new type in process
 \$ – Superstandard

LEUCO

www.leuco.com